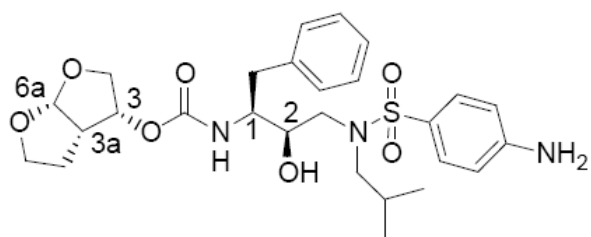
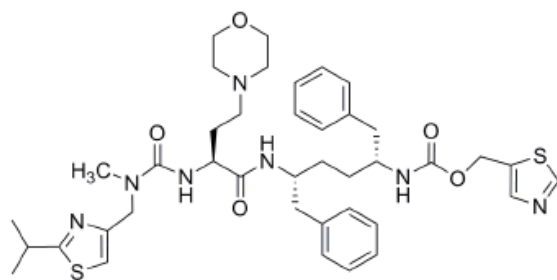


2018 07 06





-
- 1.
 - 2.
 - 3.

-
4.

1.

2.

3.

α

α

4.

5.

6.

7.

8.

9.

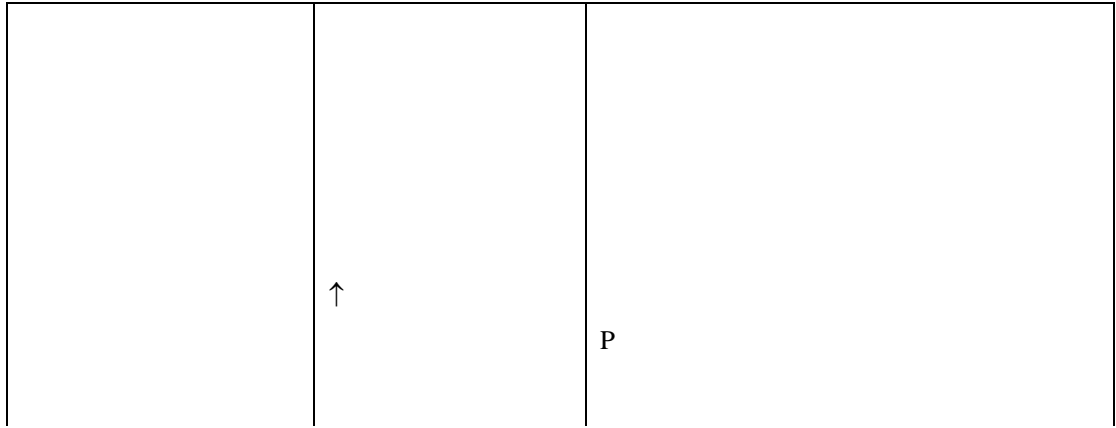
10.

11.

12.

HIV-1	NRTIs	
	↔ ↔ ↔	1 2
	↔ ↔ ↑	P
NRTIs	↔	NRTIs

HIV-1	NNRTIs	
	↑ ↑ ↑	/ CYP3A
	↓ ↓ ↓ ↑	/ NNRTI CYP3A NNRTI
	↔ ↔ ↑	CYP3A
HIV-1	CCR5	
	↑	CYP3A 150mg
HIV-1		
	↔ ↔	
-	↑	CYP3A
	↔ ↔	
/	↑ /	CYP2D6 CYP3A /



↔
↑
↑

CYP3A

	↑	CYP3A CYP3A
	↑	CYP2D6 / CYP3A
	↑	
	↑ ↑ ↑ ↑	CYP3A / P / / 200 mg/
	↑	
	↑	CYP3A
/	↔ ↑ ↑	/ CYP3A /
	↓ ↓ ↑	CYP3A / 150 mg

	↓ ↔	
-	↑ -	- CYP2D6 -
	↑	CYP3A
	↑ ↓ ↓	
CYP3A	↓ ↓ ↑	CYP3A / CYP3A
	↓ ↓ ↑ ↑	
	↑	
	↓ ↓	CYP3A /
	↑	

H₂	↔ ↔	H ₂ H ₂
HCV / glecaprevir/ pibrentasvir	↑ ↑glecaprevir ↑pibrentasvir ↓ ↓	/ OATPB1 CYP3A / glecaprevir /pibrentasvir glecaprevir pibrentasvir P-gp BCRP / OATP1B1/3 glecaprevir/pibrentasvir /
	↓	CYP3A
HMG-CoA	↑HMG-CoA	HMG-CoA CYP3A / HMG-CoA 10 mg/
	↑	
	↑	CYP3A
	↑	CYP3A QT
	↑	CYP2D6 / CYP3A
/	↔ ↑ ↔	

/	↓	
	↑	
	↑	
PDE-5	↑PDE-5	<p>PDE-5 CYP3A PDE-5</p> <p>PDE-5</p> <ul style="list-style-type: none"> • • <hr/> <hr/> <p>20mg 40mg</p> <hr/> <hr/> <p>24 1 20mg</p> <p>40mg</p> <p>PDE-5</p> <p>25mg 48 72 72</p> <p>2.5mg 10mg</p> <p>PDE-5</p>
	↑	CYP3A / P
:	↔ ↔	

/	↑ /	/ CYP3A / / /
	↑	
	↑	
↔	↑	↓

	2	3	
\pm SD	N=7	N=6	N=6
C _{max} ng/mL	4340 \pm 1616	4910 \pm 970	7918 \pm 2199
AUC _{24h} ng.h/mL	47293 \pm 19058	47991 \pm 9879	99613 \pm 34862
C _{min} ng/mL	168 \pm 149	184 \pm 99	1538 \pm 1344

