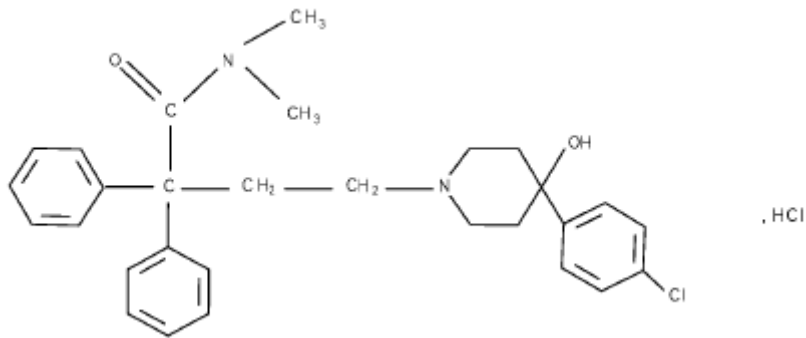


2007	02	08
2008	04	10
2010	09	26
2011	03	16
2012	02	13
2015	10	20
2016	03	04
2017	01	18
2017	04	26
2018	04	28
2018	11	30
2019	03	08
2019	04	08
2020	05	15
2020	10	12

# Loperamide Hydrochloride Capsules

Yansuan Luopaiping'an Jiaonang

N, N- -α, α- -4-( )-4- -1-



$C_{29}H_{33}ClN_2O_2 \cdot HCl$

513.51

2 mg

6-17

—	2	1	1
—	2	1	
1~2	1~6		
—	8		3 /20
	8		

12

2755 (12 ) 26 ( )  
1%

1

1. 26 1%

	% (N=2755)
	1.2
	2.7
	1.7
	1.1

(N=2755) 1% 2

2. 26 1%


321 5 ( )

1 52

3. 5 1%

	%
	(N=321)
	1.2
	2.8
	2.2
	1.2

(N=321) 1% 4

4. 5 1%


**12**

607 ( 10 13 ) 13  
( ) 1%

5

5. 12 13 1%

	%
	(N=607)
	1.2

12 (N=607) 1%

6

6.

12

13

1%


7

1/10

1/100, 1/10

1/ 1,000, 1/100

1/10,000, 1/1,000

1/10,000

7

7:

( )

	( )
	( ) ( <sup>a</sup> )
	( Stevens-Johnson )

a:

2

·  
·  
·  
·

2~6

2

6

P-

16mg

P-

2~3

P-

( 4mg)

(CYP3A4 P-

)

3~4

CYP2C8

4 2  
13

( 16mg) ( CYP3A4 P- )  
5

3

( ( ) )  
( )

40 mg 792 mg  
QT QRS /  
/

Brugada

ECG QT

(1-3 )



Ames

SOS

10mg/kg/ 11 2.5 10 40mg/kg/ 5 20mg/kg/ 40mg/kg/ 21 10mg/kg/ 5 2.5 10 40mg/kg/ 5 20 40mg/kg/ 43 40mg/kg/ 18 40mg/kg/ 16mg / 21

μ- 0.3% ( ) 95%

P- N- CYP3A4 CYP2C8

6 / / 2×6 / / 20 / /

36

2020

H10910085

19

4 17F

19

710304

400 888 9988

(029) 82576616

<http://www.xian-janssen.com.cn>