

2007	03	08
2010	10	16
2011	02	23
2012	04	12
2015	12	01
2016	03	02
2017	12	13
2018	05	11
2018	10	26
2020	02	17

[]

®

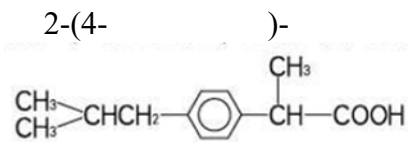
Ibuprofen Suspension Drops

Buluofen Hunxuan Diji

[]

C₁₃H₁₈O₂

206.28



[]

[]

[]

15ml 0.6g

[]

6-8

24

4

5-10mg/kg/

6-11	5.5-8.0	
12-23	8.1-12.0	
2-3	12.1-15.9	

[]

1.

2.

DRESS

Stevens-Johnson

(AGEP)

[]

1.

2.

3.

4. / /

5.

6.

[]

1.6

2.

3.

4.

5.

6.

7.

8.

9.

10. COX-2

11.

12.

13. COX-2 NSAIDs 3

NSAIDs COX-2

/

14. NSAIDs

15. /

16. NSAIDs

17.

18. NSAIDs

EM Stevens-Johnson SJS

TEN DRESS

EM

DRESS AGEP

19.

20.

21.

22.

/

[]

[]

[]

1.

2.

[]

[]

[]

1.2-2.1

99%

T1/2

1.8-2

60%~90%

100% 24

1%

[]

[]

15

1

[]

36

[]

2015

2012B00134

[]

H19991012

[]

Shanghai Johnson & Johnson Pharmaceuticals, Ltd.

219

200245

800-8201188 400-8883060

021-62824529



Children's
Motrin[®]
Ibuprofen

2007	03	08
2010	10	16
2011	02	23
2012	04	12
2014	10	22
2015	12	01
2016	03	02
2017	12	13
2018	05	11
2018	10	26
2020	02	17

[]

®

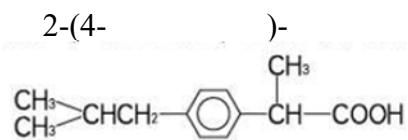
Ibuprofen Suspension Drops

Buluofen Hunxuan Diji

[]

C₁₃H₁₈O₂

206.28



[]

[]

[]

15ml 0.6g

[]

6-8

24

4

5-10mg/kg/

6-11	5.5-8.0	
12-23	8.1-12.0	
2-3	12.1-15.9	

[]

1.

2.

DRESS

Stevens-Johnson

(AGEP)

[]

1.

2.

3.

4. / /

5.

6.

[]

1.6

2.

3.

4.

5.

6.

7.

8.

9.

10. COX-2

11.

12.

13. COX-2 NSAIDs 3

NSAIDs COX-2

/

14. NSAIDs

15. /

16. NSAIDs

17.

18. NSAIDs

EM Stevens-Johnson SJS

TEN DRESS

EM

DRESS AGEP

19.

20.

21.

22.

/

[]

[]

[]

1.

2.

[]

[]

[]

1.2-2.1

99% T_{1/2} 1.8-2 60%~90% 100% 24
1%

[]

[]

20

1

[]

36

[]

2015

2012B00134

[]

H19991012

[]

Shanghai Johnson & Johnson Pharmaceuticals, Ltd.

219

200245

800-8201188 400-8883060

021-62824529



Children's
Motrin[®]
Ibuprofen